

## Tumor VEGF:VEGFR2 autocrine feed-forward loop triggers angiogenesis in lung cancer

Sampurna Chatterjee, ... , Roman K. Thomas, Roland T. Ullrich

*J Clin Invest.* 2013;123(7):3183-3183. <https://doi.org/10.1172/JCI70810>.

### Corrigendum

Original citation: *J. Clin. Invest.* 2013;123(4):1732–1740. doi:10.1172/JCI65385. Citation for this corrigendum: *J. Clin. Invest.* 2013;123(7):3183. doi:10.1172/JCI70810. The affiliations for Roman K. Thomas were incorrect. The correct affiliations list is above. The authors regret the error.

**Find the latest version:**

<https://jci.me/70810/pdf>





## Corrigendum

### GSK3 $\beta$ regulates physiological migration of stem/progenitor cells via cytoskeletal rearrangement

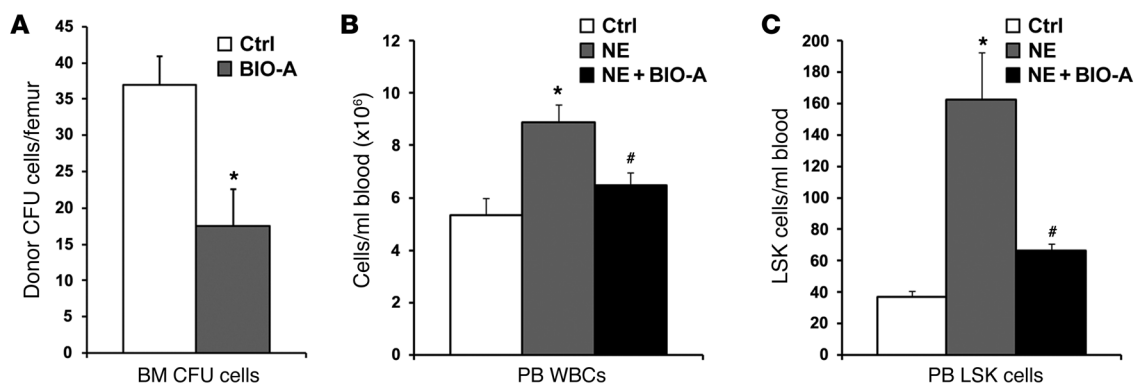
Kfir Lapid, Tomer Itkin, Gabriele D’Uva, Yossi Ovadya, Aya Ludin, Giulia Caglio, Alexander Kalinkovich, Karin Golan, Ziv Porat, Massimo Zollo, and Tsvee Lapidot

Original citation: *J Clin Invest.* 2013;123(4):1705–1717. doi:10.1172/JCI64149.

Citation for this corrigendum: *J Clin Invest.* 2013;123(7):3183. doi:10.1172/JCI70656.

Figure 3, B and C, was labeled incorrectly. The correct figure is below.

The authors regret the error.



## Corrigendum

### Tumor VEGF:VEGFR2 autocrine feed-forward loop triggers angiogenesis in lung cancer

Sampurna Chatterjee,<sup>1</sup> Lukas C. Heukamp,<sup>2</sup> Maike Siobal,<sup>1</sup> Jakob Schöttle,<sup>1</sup> Caroline Wiczorek,<sup>1</sup> Martin Peifer,<sup>1</sup> Davide Frasca,<sup>2</sup> Mirjam Koker,<sup>1</sup> Katharina König,<sup>2</sup> Lydia Meder,<sup>2</sup> Daniel Rauh,<sup>3</sup> Reinhard Buettner,<sup>2</sup> Jürgen Wolf,<sup>4</sup> Rolf A. Brekken,<sup>5</sup> Bernd Neumaier,<sup>1</sup> Gerhard Christofori,<sup>6</sup> Roman K. Thomas,<sup>2,7</sup> and Roland T. Ullrich<sup>1,4</sup>

<sup>1</sup>Max Planck Institute for Neurological Research, with Klaus-Joachim-Zülch Laboratories of the Max Planck Society and the Medical Faculty of the University of Cologne, Cologne, Germany.

<sup>2</sup>Institute of Pathology, University Hospital Medical School, Cologne, Germany.

<sup>3</sup>Fakultät Chemie, Chemische Biologie, Technische Universität Dortmund, Dortmund, Germany.

<sup>4</sup>Department I of Internal Medicine and Center for Integrated Oncology, University Hospital of Cologne, Cologne, Germany.

<sup>5</sup>Departments of Surgery and Pharmacology, Hamon Center for Therapeutic Oncology Research, University of Texas Southwestern Medical Center, Dallas, Texas, USA.

<sup>6</sup>Institute of Biochemistry and Genetics, Department of Biomedicine, Basel, Switzerland.

<sup>7</sup>Department of Translational Genomics, University of Cologne, Cologne, Germany.

Original citation: *J Clin Invest.* 2013;123(4):1732–1740. doi:10.1172/JCI65385.

Citation for this corrigendum: *J Clin Invest.* 2013;123(7):3183. doi:10.1172/JCI70810.

The affiliations for Roman K. Thomas were incorrect. The correct affiliations list is above.

The authors regret the error.